



PROSPECTUS



CITY OF LONDON ACADEMY
ISLINGTON

WHERE STUDENTS SUCCEED

MESSAGE FROM THE PRINCIPAL

As Principal of the City of London Academy Islington it is with great pleasure that I welcome you to our Academy..



The City of London Academy Islington is an inclusive and vibrant community with a track record of providing an excellent education to all of our students. This was recognised in our March 2019 Ofsted inspection, in which the Academy was graded outstanding in all four of the main categories; leadership and management, teaching and learning, personal development and behaviour, and outcomes for pupils. The inspectors commented that this was a school in which 'no child is left behind'.

We set challenging, aspirational targets for our students because we know that every single student at the Academy is capable of amazing achievements, and we want to ensure that they have a wealth of opportunities that they are qualified to access when they graduate from the Academy.

We share uncompromisingly high aspirations for our students and are committed to supporting every child to achieve their ambitions, whatever they might be. At the City of London Academy Islington, we live and work by the values of respect, responsibility and integrity and it is these values that underpin our actions and behaviours.

In addition to providing an outstanding academic experience to our students, we offer an impressive range of enrichment opportunities designed to extend and enhance students' learning and develop their cultural capital. We hope that all students will graduate from the Academy with excellent qualifications, but also having developed a broad range of passions, interests and skills that extend beyond the confines of the formal curriculum.

I look forward to welcoming your child to the Academy; an outstanding educational provider.

Ms S Jacob BA (Hons) PGCE



OUR VISION:

To be an outstanding Academy, where students make exceptional progress and where the highest of aspirations and pursuit of excellence transforms the lives of the young people of Islington.



ABOUT THE TRUST

The City of London Academies Trust is driven by the ambition to provide world-class experiences and deliver exceptional educational outcomes for the young people we serve. You will find high expectations in all of our schools which are characterised by a common understanding of what makes an outstanding education.

As well as being judged by excellence in examination results, our success is also characterised by high standards of behaviour, sporting and creative achievement, as well as the politeness, self-discipline and the compassion of our pupils. It is important to us that pupils enjoy learning and feel safe and happy at school, and we enable them to develop their confidence, independence and self-awareness required for their future success and well-being.





ACADEMY GOVERNANCE

An Academy is an independently governed, state-funded school which provides education free-of-charge to all students. The City of London Academy Islington was jointly sponsored by the City of London Corporation and City, University of London, who together contributed £2 million towards the capital cost of the project and continued their extensive support of the Academy during its first decade.

In September 2020, the Academy joined the City of London Corporation's multi-academy trust. The Academy has retained a partnership relationship with City, University of London and we continue to benefit from their support of our students.

Further information on the Governing Body is available and any enquiries should be directed to the Academy on the number provided in this prospectus.

OUTSTANDING CARE AND SUPPORT

High achievement and success are only possible when students are happy and enjoy their learning; feel they are recognised and valued as individuals; and when they have a clear understanding of how they are expected to behave.

The Academy provides excellent care and support to all students within a learning environment that sets high expectations of student progress and student behaviour. As such, there is a clear system of rewards and 'firm but fair' discipline. The Academy expects students to have a positive attitude towards their learning, and demonstrate respect, integrity and responsibility at all times. Success, excellent attendance and punctuality, hard work, and participation in school activities are recognised in assemblies. End-of-term achievement assemblies for all year groups are organised to celebrate students' successes.

Students who fail to comply with the behaviour policy or fail to respond to encouragement and support to do so will be sanctioned accordingly. Discipline is the shared responsibility of students, parents and carers and the Academy. The Academy will support parents and carers who wish their child to be educated in a nurturing yet purposeful atmosphere with high standards expected of all.

Our tutor and pastoral systems support Academy values, fostering a culture of pride and encouraging students to take on additional leadership roles such as mentoring and coaching, being part of the Academy Council or being a prefect. Students take responsibility for enrichment, charity and celebration activities, contribute to the wider aspects of Academy life, and acknowledge one another's successes.

All students have a daily tutor session in which students:

- participate in our reading programme
- discuss and debate topical social, cultural and political issues and events
- receive peer mentoring
- celebrate successes and achievements of their tutor group





UNIFORM

All students are expected to take pride in their appearance and must attend the Academy in full, correct Academy uniform.

The uniform is simple, smart and professional. Students are expected to comply with policy, which includes always having an Academy bag with necessary stationery, equipment, a student planner and a reading book. This is to ensure that all students are fully equipped and ready to learn.

It is also expected that students will adhere to the uniform policy when travelling to and from the Academy and be a credit to their families and to the Academy.

An acceptance of a place at the Academy implies an acceptance of our Uniform Policy.

The Academy consulted with staff, students and parents to develop the uniform design.

A full list of the Academy uniform and the expectations regarding personal presentation are available for parents on the Academy website and also from the Academy itself.



CURRICULUM

Our aim is to unlock the potential of all students through learning pathways tailored to their individual needs. This enables each student to develop the necessary skills and knowledge to gain meaningful access to the widest possible range of subjects. Our broad curriculum offer supports students to progress to further and higher education and the world of work.

We strive to support our students' spiritual, moral, social and cultural development, equipping them to be thoughtful, caring and active citizens in school and in wider society.

Students at City of London Academy Islington follow a traditional academic curriculum. We believe that all students can thrive and our meticulous tracking system enables us to intervene quickly to provide bespoke support for individual students.

We believe everything that happens at the City of London Academy Islington contributes to a young person's academic and social progress and their capacity to learn.

The curriculum at City of London Academy Islington aims to:

- Meet the range of needs and interests of all learners so that no student gets left behind
- Maximise the academic attainment and progress of all students
- Ensure that students develop essential skills for ongoing learning, their lives and later employment
- Ensure students have high self-esteem and aspirations and take responsibility for their learning and personal development
- Ensure students are prepared to make informed choices about their future pathway



Key Stage 3:

At Key Stage 3 we have developed a broad and bespoke curriculum for our students focused on developing the skills and knowledge required to become experts in each of the subjects they study. We believe this unique approach nurtures high aspirations amongst our students and helps them to achieve outstanding outcomes.

All students study the core curriculum English, mathematics and science. Other subjects which will be covered include:

- Art
- Technology
- Drama
- Modern Foreign Languages – French or Spanish
- Geography
- History
- Religious Education
- Computer Science
- Music
- Physical Education
- Personal, Social, Health and Citizenship Education

Key Stage 4:

All students study GCSEs in English language, English literature, mathematics, science, and religious studies and have PE as part of their timetable. A broad range of academic and vocational subjects are offered to students in Key Stage 4, with a combination of setting and mixed-ability groupings:

- Biology / Chemistry / Physics
- Further mathematics
- Geography / History
- French / Spanish / Turkish
- Art
- Business Studies
- Music
- Food Technology
- Design Technology
- PE
- Computer Science
- BTEC Business
- BTEC ICT
- BTEC Sport
- BTEC Health and Social Care

We also support students to gain a GCSE qualification in their home language.

STUDY SUPPORT

The Academy delivers many initiatives to support students to develop their study skills and improve their academic progress and achievement. These include;

- Extra help with homework
- Support to develop reading skills
- Academic enrichment
- Extra help with GCSE work and revision
- Extra help with literacy and numeracy
- Access to computers, the internet and the library
- Residential revision weekends
- Academic mentoring
- Academic tutors from City, University of London, Deloitte and the Access Project

In addition, the Academy employs academic tutors in English, mathematics and science to provide in-house tutoring, in-class support and academic guidance.

READING

We are passionate about reading at City of London Academy as it improves all literacy skills and those children who read regularly achieve higher grades in their examinations. Reading is a vital skill crucial for future success.

We have a range of reading strategies at the Academy to ensure that all students read at or above their chronological age and develop a love of reading:

- We expect all students to have an appropriate reading book as part of their equipment to encourage students to read for pleasure

- All students read a class text aloud during tutor time twice per week and receive feedback on their reading
- Students are encouraged to read aloud in their lessons
- We assess the reading ages of all students twice per year and teachers use this information to inform their support for individual students
- Any students who are below their chronological reading age receive interventions such as reading in smaller groups or a more intensive programme of reading one-to-one, both of which have led to accelerated results
- Students can regularly access the library during lessons, at break and lunch times and after school
- Sixth form students are reading buddies to younger students

HOMEWORK

Homework is an integral part of our curriculum. It helps to raise the achievement of students by consolidating and extending their learning and helping them to become independent learners. Homework creates opportunities for creativity and choice, motivating and engaging both students and parents.

We use the online learning platform, Google Classroom, which allows us to post lesson resources and homework tasks online for students to access at home. This can also be used by parents and carers to monitor their child's homework. We can provide laptops to students on request to support their home learning.

A photograph of two young women in school uniforms. The woman on the left has long, curly brown hair and is wearing a dark blue headband. The woman on the right has long, dark braids. They are both looking down at books they are holding, appearing to be in a classroom or library setting. The background is slightly blurred, showing what might be a whiteboard or a screen.

ASSESSMENT AND REPORTING

The Academy has high expectation of all pupils and sets ambitious targets for achievement. Regular assessment ensures that students' progress is carefully monitored, and underachievement is addressed in an effective and timely manner.

This is achieved through:

- Regular and rigorous scrutiny of classwork and homework
- Moderation of students' work against national standards and targets
- Regular formal assessments prior to the issuing of termly reports

The information collected forms an ongoing student profile. Individual progress, both academic and personal, is carefully monitored and reviewed by the Head of Year.

SPECIAL EDUCATIONAL NEEDS

The Academy is an inclusive learning environment and admits students with special educational needs on an equal basis with others. We support our students beyond the requirements and expectations laid out in the SEN Code of Practice.

Children with additional learning needs are given support by teachers, teaching assistants and learning mentors who are experienced in helping students with special educational needs.

Specialist staff work with subject teachers to develop a range of teaching strategies and resources for use in the classroom. They also support individual students, identify literacy and numeracy gaps and develop and monitor individual education plans. We also provide bespoke assistance and support to those students whose first language is not English both in the classroom and, where necessary, through withdrawal from timetabled lessons.

The systems used in the Academy allow staff to get to know their students and make an important contribution to the personalised education the Academy offers. The Academy cultivates a strong working relationship between staff, students and their families. We believe that regular contact between these three key groups encourages students to become more effective, engaged and responsible learners.

Our inclusion department also works alongside a range of external agencies and mental health professionals to support students with their social, emotional and mental health needs by providing bespoke interventions and specialist support.

It is important that you feel supported as a parent or carer, and we will work in partnership with you to ensure your child achieves excellence.



CHALLENGING THE MOST ABLE

We aim to ensure that all students have high aspirations and are stretched and challenged to reach their potential. A range of strategies are employed both inside and outside of the classroom to drive and motivate our most able students:

GIFTED AND TALENTED

At the City of London Academy Islington, we like to use a range of measures to identify pupils who are gifted and talented:

- Data and teacher assessment
- Pupil performance
- Teacher recommendation / discussion with student
- Transition information from partner primary schools

In terms of curriculum provision for gifted and talented pupils, teachers at the Academy:

- Incorporate 'stretch and challenge' tasks in all lessons
- Model high-quality work and provide exemplars
- Encourage all students to become 'independent learners'
- Develop learners through higher order questioning and opportunities to develop critical thinking skills
- Provide opportunities to study and learn beyond the strict confines of the formal curriculum

Pupils who are identified as gifted and talented are also given opportunities to participate in extra-curricular activities and are given exciting opportunities to further enhance their educational experience and develop more holistically. These include:

- Residential trips
- Academic and career mentoring
- Oxbridge preparation workshops and support
- Masterclasses
- Additional GCSE qualifications, such as Further Mathematics
- High-quality work experience placements
- University summer school programmes
- Debating classes
- Student leadership opportunities

ENRICHMENT

The Academy offers a wide range of extra-curricular activities and enrichment opportunities, both at lunchtime and after school, as well as at weekends and during the school holidays. Visits, residential trips and other ventures are part of our provision and we encourage all students to get involved. The Academy has a Combined Cadet Force, open to students in years 9 to 13, which offers enrichment activities through the Army Cadet training syllabus.

Student leadership is an important part of life at the Academy. Students can apply to be a Student Ambassador in years 7 to 10, a Prefect in Year 11, or to be part of the Student Leadership Team in the Sixth Form. These students get the opportunity to represent the Academy at a range of events, in addition to developing their leadership skills through training and participation in a range of leadership activities. Activities include leading primary school sports festivals, leading assemblies at the Academy, and participating in leadership training at the Emirates Stadium, in collaboration with Arsenal. Members of the Student Leadership Team are invited to attend the Lord Mayor's Banquet and other prestigious events hosted by the Corporation of London.

Students enjoy our annual Activities Week, held at the end of the Summer Term, where a multitude of trips take place and external providers facilitate a wide range of experiences. These include our annual trip to Disneyland Paris and workshops delivered by theatre companies, in addition to exciting trips to Ninja Warrior Adventure Park, Go Ape, Water Wipeout and many more. During the Summer Term, the Academy holds a Culture Day to recognise and celebrate diversity and inclusion. The Academy also holds an annual Charity Week in the Autumn Term during which students support the local community, giving their time to assist others and contribute to community initiatives. Trips have included visiting local primary schools, food banks and community gardens.

Our sports provision is extensive. Clubs are offered each day at lunchtime and after school in a wide range of physical activities. The Academy works closely with professional coaches, having developed partnerships with London Football School, Arsenal and Islington Boat Club.

Throughout their time at the Academy, students receive outstanding careers advice and access to high-calibre careers experiences. Students participate in work experience and a wealth of events that are organised with our partners, including City, University of London, Deloitte, the Corporation of London, Lawyers in Schools Programme and the Access Project.

We actively encourage students to get involved in enrichment and work-related learning activities to broaden and enhance their educational experience, help them develop new skills, interests and attributes, and prepare them for a career path of their choosing.



COMBINED CADET FORCE

The City of London Academy Islington (HAC) CCF was the first contingent to be set up under the Government-sponsored Cadet Expansion Programme in 2012 and is proudly affiliated to the Honourable Artillery Company based nearby at Finsbury Barracks. We offer enjoyable military-themed and adventurous activities to students in years 9 to 13 with a syllabus that includes first aid, navigation and expedition training, field-craft, target-shooting and drill. The contingent also has an active Corps of Drums. The training is delivered weekly after school as well as on organised trips and camps including training days at the HAC. Training opportunities include climbing, kayaking, mountain biking and pool lifeguard training (NPLQ). The personal attributes cadets acquire at this formative stage will remain of value throughout their personal and professional lives.

Highlights in recent years include overseas camps to Germany, attendance at the national cadet first aid competition, and meeting members of the royal family on various occasions. We have had cadets represent the contingent by reading at St Paul's Cathedral for Remembrance Day, as well as other ceremonial events.

The COLAI (HAC) CCF regularly takes part in public events such as the Lord Mayor's Show and Armed Forces Day. We also participate in ceremonial events for the City of London and the HAC. The CCF calendar is very busy throughout the year and all cadets are expected to participate in a number of events during their time in the contingent.



SIXTH FORM

We have a dynamic and high-achieving sixth form. Through our partnership with City of London Academy Highbury Grove, we are able to offer our sixth form students a wealth of post-16 educational options and opportunities across the two school sites. In our Sixth Form, we offer every student:

- A diverse and challenging academic curriculum
- Outstanding teaching from staff with a high degree of subject specialism and expertise
- Small class sizes that enable us to provide personalised support and individual attention
- Fantastic work experience, enrichment and student leadership opportunities
- Excellent support for progression to higher education or the workplace

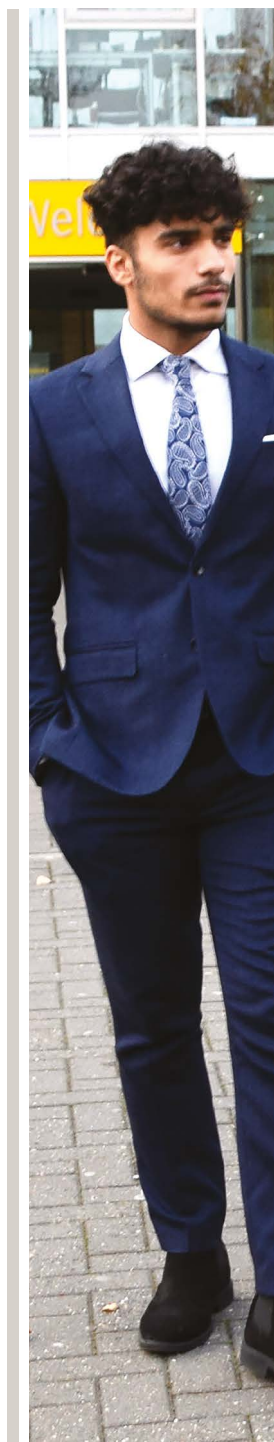
We take great care with individual course guidance because we want our students to make informed decisions that reflect their interests, abilities and future educational and career aspirations.

Our enrichment programme offers students a wide range of opportunities to participate in engaging and enjoyable activities, including sports and fitness, subject masterclasses, work experience, university visits and residential courses, and mentoring programmes. Our students benefit from our close working partnerships with Deloitte, City, University of London and the City of London Corporation, who all provide incredible opportunities for our students.

Our sixth form students play an important part in our student leadership programme, by providing support and mentoring to younger students. They act as reading buddies and help younger students develop their organisational and study skills. They also facilitate extra-curricular clubs and activities. This provides the sixth form students with a valuable opportunity to develop their leadership skills and demonstrate that they can be responsible and reliable young adults.

We offer excellent pastoral support to our pupils. All sixth form students will be allocated a personal tutor to support their progress and attainment and ensure their success in the sixth form. The sixth form tutoring programme also provides students with tailored support with progression to higher education, high-quality apprenticeships or a career path of their choosing.

It is our expectation that our students are given the academic grounding and support they require to progress to elite higher education institutions, including Russell Group and Oxbridge universities and prestigious apprenticeships. The vast majority of our students secure places at university following their time in the sixth form on a range of high-quality degree programmes. This is owing to the expert support they are given to research, prepare and submit high quality university applications.





One of the crucial differences between school sixth forms and colleges is that, as a school, we believe that we are accountable not just to students, but also to their parents and carers. As such, we have a well-established system of parents' evenings and interim and full progress reports. Parents are informed on a regular basis of their child's progress. Target grades and expectations are made very clear to students and are shared with parents. Where there are concerns about academic progress or attendance, parents will be promptly informed.

A photograph of three students in a science laboratory. They are wearing maroon school uniforms and clear safety goggles. One student in the foreground is using a pipette to transfer a yellow liquid into a test tube. Another student is looking on, and a third is partially visible in the background. The lab bench has a rack of test tubes, one containing yellow liquid, and a small flask. Educational posters are visible on the wall behind them.

PARENT INFORMATION

The Academy works in partnership with parents and maintains regular contact to update them on their child's progress. This includes a termly progress report, parent workshops, information evenings and an annual parents' evening for each year group.

Parents and carers are entitled to see copies of the Academy policies. Many of the key policies are available on our website. Should you wish to see a copy of an Academy policy, or for further information, please call the Academy office.

Full details of the curriculum offered by the Academy, contact details and a full copy of all Ofsted reports are also available on the Academy website.



ADMISSIONS

The City of London Academy Islington is a non-selective school and serves children of all abilities.

In the case of over-subscription, priority will be given to students with statements of Special Educational Needs where the Academy is named on the statement.

Applications are then considered against the criteria set out below. The criteria are applied in the following order and subject to the application of fair banding:

- a) Children in public care – Looked After Children
- b) Admission of students whose siblings currently attend the Academy and who will continue to do so on the date of admission
- c) Admission of students whose siblings currently attend the Richard Cloudesley School and who will continue to do so on the date of admission
- d) Up to ten students resident in the City of London. If more than ten students apply, selection within fair bands to be determined by drawing lots
- e) Admission of students on the basis of proximity to the school using shortest safest walking distance from the main entrance of the Academy to the main entrance to the child's home

Applications to the Academy will need to be made on the London Borough of Islington's Common Application Form (CAF).



CITY OF LONDON ACADEMY ISLINGTON

Prebend Street
Islington
London N1 8PQ

T: 020 7226 8611 E: info@colai.org.uk
www.colai.org.uk



CITY OF LONDON
ACADEMIES TRUST

COLLEGIATE
SIXTH FORM